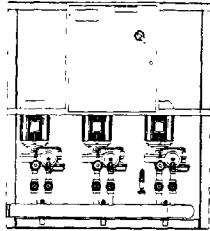


JOB _____		B&G REPRESENTATIVE _____	
UNIT TAG NO _____	ORDER NO _____	DATE _____	
ENGINEER _____	SUBMITTED BY _____	DATE _____	
CONTRACTOR _____	APPROVED BY _____	DATE _____	

SHOWN WITH OPTIONAL CONTROL PANEL



3 Pump 70M Series Pressure Booster System Vertical Configuration

DESIGN DATA:

System Capacity: _____ GPM
 Pressure Required @ Discharge Header: _____ PSIG
 Pressure Drop Through Package (include PRV): _____ PSIG
 Minimum Suction Pressure: _____ PSIG

PUMP DATA:

	Pump No. 1	Pump No. 2	Pump No. 3
Gallons per Minute	_____	_____	_____
Pump TDH (feet):	_____	_____	_____
Header Size _____ inch	_____	_____	_____
<input type="checkbox"/> PRV or <input type="checkbox"/> Check Valve	Size _____	Size _____	Size _____
Series 1531	Size _____	Size _____	Size _____
Motor HP	_____	_____	_____
Motor RPM _____ Voltage _____ Hertz _____ Phase _____	_____	_____	_____

STANDARD EQUIPMENT:

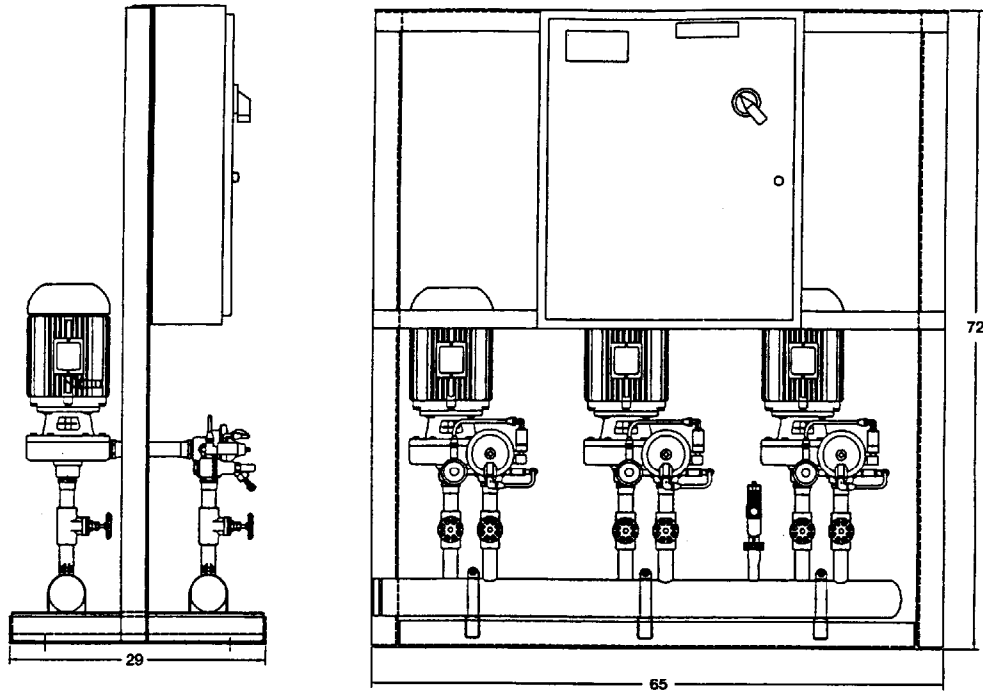
Assembled System. Basic unit fully piped, wired, tested and mounted on steel frame includes: Bronze-fitted B&G pumps; shut-off valves on suction and discharge of each pump; combination pressure reducing-nonslam check valves on discharge side of each pump; thermal protection in discharge header. Headers and interconnecting piping are copper.



70M Series Pressure Booster System - 3 Pump

Control Panel Included

- Yes (See Submittal D-216)
- No



Dimensions valid for 3" and 4" Headers only.
"Do not use for construction. Dimensions are approximate and
subject to change. Contact factory for certified dimensions."

For further information, contact ITT Bell & Gossett, 8200 N. Austin Avenue, Morton Grove, IL 60053,
Phone (847) 966-3700 — Facsimile (847) 966-8408 — <http://fhs.ittind.com>

ITT Bell & Gossett
ITT Fluid Technology Corporation